



Located next to the tee box on the par 5, 16th hole, the Sawgrass Suite package allows you to enjoy a prestigious, private hospitality venue for one day in an exclusive environment. THE PLAYERS Stadium Course at TPC Sawgrass offers three of the most dramatic finishing holes in all of golf, and your guests will be a part of the action. Starting with 16, a tee shot in the fairway is imperative as the players consider the risk/reward this reachable hole offers. Ticket packages are flexible and customizable to suit your company's size and needs.

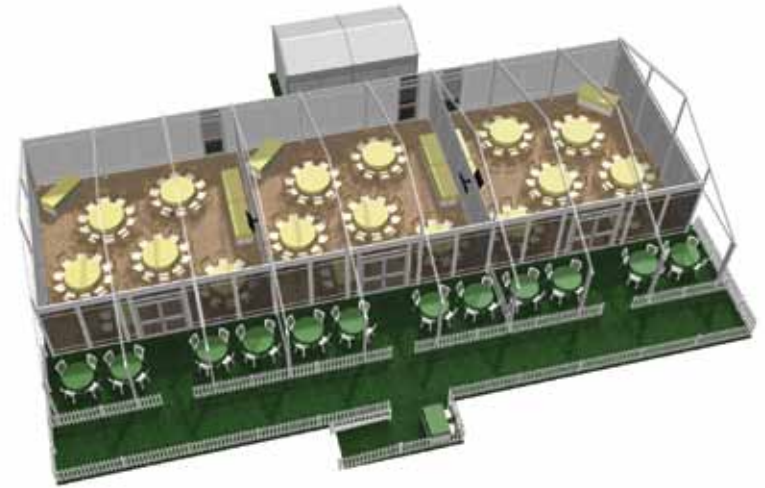
THE SAWGRASS SUITES PROVIDE:

- Upscale food and premium bar available for purchase
- Listing on Sawgrass Suite locator board
- Corporate identification inside Sawgrass Suite
- Televisions and courtesy telephones
- Complimentary Daily Pairings Sheets
- ShotLink® Scoring System
- Private restroom facilities
- This investment may be deductible as an entertainment expense incurred in conjunction with a charitable sporting event. Please consult your tax advisor.

Package includes:

- Admission for 75 guests into your Sawgrass Suite (one day – subject to availability Thursday, Friday, Saturday or Sunday)
- 10 tickets per day with access to The Turn, Monday – Sunday
- 6 VIP parking passes, good for selected day
- 25 Preferred parking passes, good for your selected day
- 1 invitation (for 2 people) to THE PLAYERS Charity Celebration





Together, anything's possible.

The biggest winners at THE PLAYERS Championship are the charities who benefit from the tournament's net proceeds. Since 1977, when THE PLAYERS moved to Ponte Vedra Beach, more than \$34 million has been contributed to Northeast Florida charities as a result of the tournament, including more than \$3 million in 2009. By supporting the PGA TOUR and THE PLAYERS, you are supporting local charities.

**Ask us about early bookings
and multi-year pricing!**

SPONSORED BY PGA TOUR, INC., DEPARTMENT OF AGRICULTURE DIVISION OF CONSUMER SERVICES REGISTRATION NUMBER CH8173, PURSUANT TO CHAPTER 496 OF THE FLORIDA STATUTES. A COPY OF THE OFFICIAL REGISTRATION AND FINANCIAL INFORMATION MAY BE OBTAINED FROM THE DIVISION OF CONSUMER SERVICES BY CALLING (800) 435-7352 TOLL-FREE WITHIN THE STATE OF FLORIDA. FOR OUTSIDE THE STATE OF FLORIDA, CALL (850) 488-2221. REGISTRATION DOES NOT IMPLY ENDORSEMENT, APPROVAL OR RECOMMENDATION BY THE STATE. THE PACKAGE PURCHASE IS NOT TAX DEDUCTIBLE AS A CHARITABLE CONTRIBUTION BY THE CONSUMER. THE INVESTMENT MAY QUALIFY FOR A 100% DEDUCTION AS AN ENTERTAINMENT EXPENSE INCURRED IN CONNECTION WITH A CHARITABLE SPORTING EVENT. PLEASE CONSULT YOUR TAX ADVISOR.

To learn more, call 904.280.4722 or visit PGATOUR.COM